

## MDRB

MDRB is a 5 in 1 stepper driver module base board designed to use with popular A4988/DRV8825 or TMC2208 modules. Configurations to each module are supported such as microstepping or input logic inverting. Input logic level 3.3V and 5V compatible.

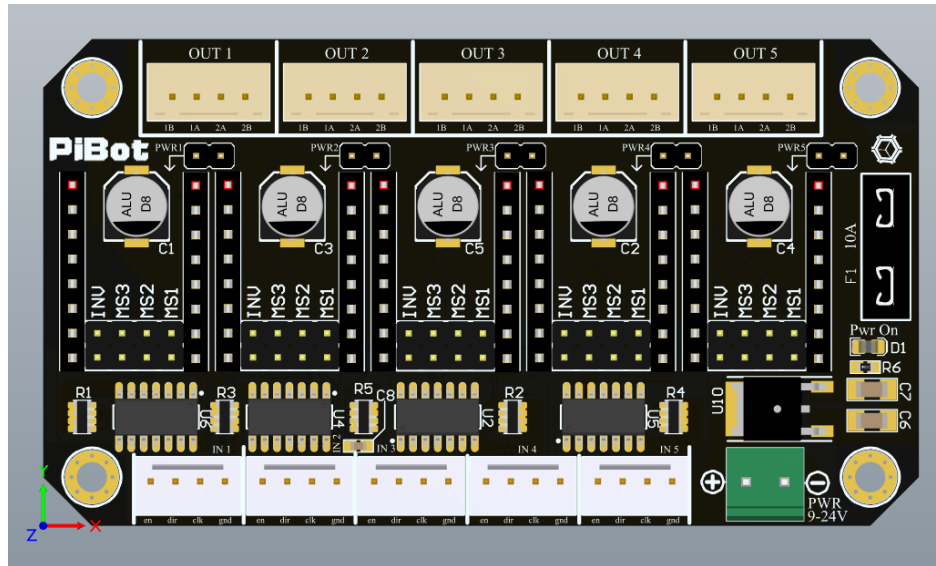
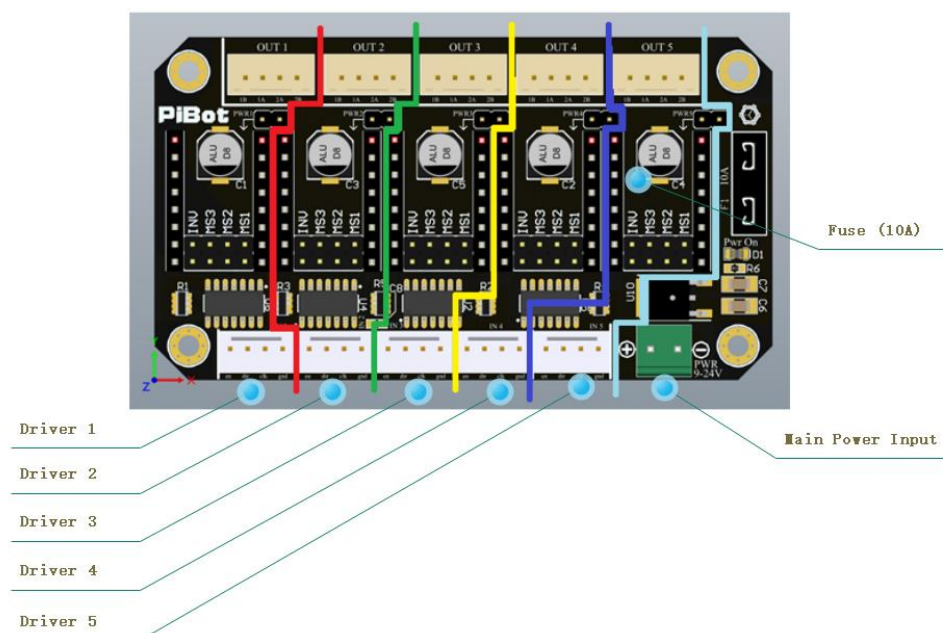
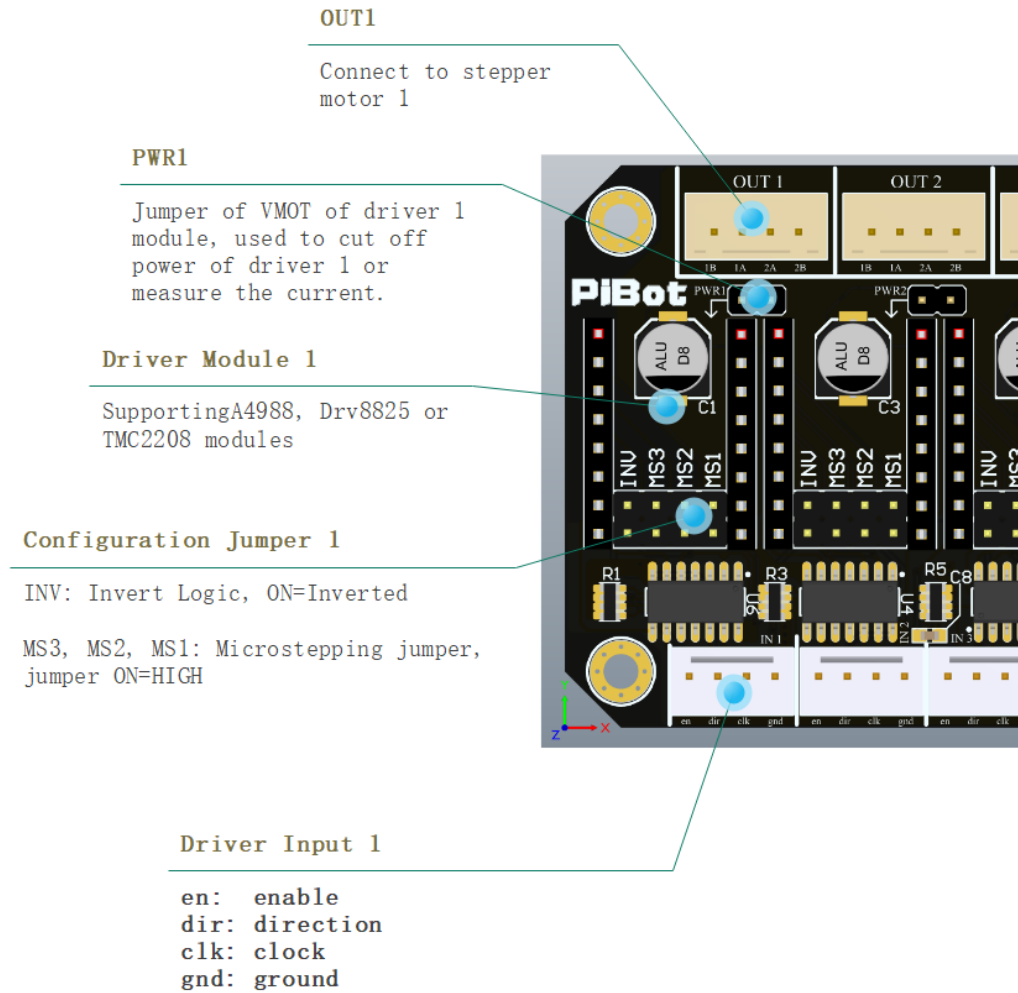


Fig1: MDRB overview

Application of MDRB is designed to be very easy. The function area divided in to 6 sections, namely Driver 1 – 5 and a power area.





#### Jumper Configuration (A4988 for example)

DIV	MS1	MS2	MS3
1	OFF	OFF	OFF
2	ON	OFF	OFF
4	OFF	ON	OFF
8	ON	ON	OFF
16 (Default)	ON	ON	ON

#### Invert PIN Logic table

INV	en	dir	clk
OFF (Default)	LOW = Enabled HIGH = Disabled	HIGH = CW LOW = CCW	Rising edge = 1 step
ON	HIGH = Enabled LOW = Disabled	LOW = CW HIGH = CCW	Falling edge = 1 step

\*CW = Clock wise, CCW = Counter clock wise